

The image features a background of various fabric swatches in shades of green, blue, and orange, arranged in a layered, overlapping fashion. A white hexagonal grid pattern is overlaid on the entire image. In the top center, there is a white rectangular box containing the Paragon Furniture logo.

PARAGON[™]
FURNITURE

OINGO STOOL
NOW
FABRIC OPTIONS



>Index

The fabric options listed below are specific to the Oingo Stool. For a comprehensive selection of available fabrics, please refer to the NOW Fabric Options document.

(Total number of available pattern colors in parenthesis)

Grade 2

Pg 3- Dillon (32)
Pg 3- Impulse (27)
Pg 4- Yosemite (11)

Grade 3

Pg 4- Viceroy (19)

Grade 4

Pg 5- Box Chain (17)
Pg 5- Castillo (16)
Pg 6- Golly (22)
Pg 6- Lara (58)
Pg 7- Staple (29)
Pg 7- Vibe (23)

Grade 5

Pg 8- Lattice (10)
Pg 8- Midway (5)

Grade 6

Pg 9- Edgeline (22)
Pg 9- Endurance EPU (36)
Pg 10- Hopsack (18)
Pg 10- Silvertex NEO (37)
Pg 11- Tribeca CV (20)
Pg 11- Vanguard CV (18)

Grade 7

Pg 12- Dexter EPU (13)
Pg 12- Level (9)
Pg 13- Mixer EPU (20)
Pg 13- Row (30)
Pg 14- Sentiero (24)
Pg 14- Vector (9)

Grade 8

Pg 15- Riverstone (9)

Grade 9

Pg 15- Silica (58)

Grade 10

Pg 16- Meteor (9)
Pg 16- Pebble Trail (8)



Look for this symbol
for upholsteries best
suited for healthcare
applications.

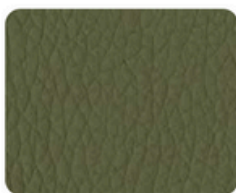


Dillon

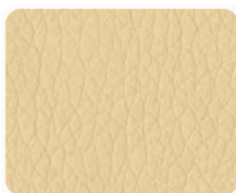
Additional Colors / Order Samples: culpcontract.com



Apple Green



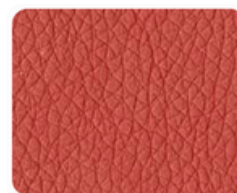
Sage



Straw



Fiesta



Lipstick



Ocean



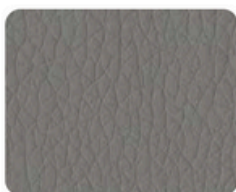
Williamsburg



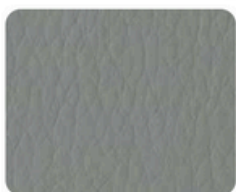
Quarry



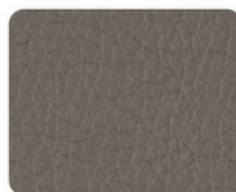
Java



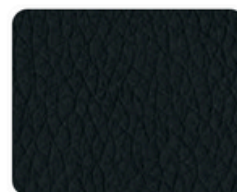
Steel



Lucid



Storm



Black

content: 100% Polyurethane
finish: Antimicrobial - Silver Ion Technology
repeat: Non-Matching
durability: 200,000 Double Rubs
seam strength: 92 lbs. Warp / 77 lbs. Weft
flame retardance: UFAC / NFPA 260 Class 1, CAL 117-2013 Section 1
cleaning: W (Bleach Cleanable 5:1)

CULP CONTRACT

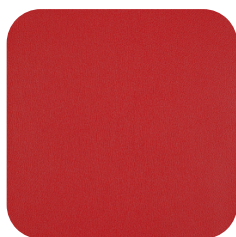
contract@culp.com | 336.888.6274

Impulse

Additional Colors / Order Samples: douglassfabric.com



Cobalt



Lipstick



Flora



Sungold



Pewter



Tangerine



Steel



Espresso



Bayside

content: 100% PVC Vinyl, Polyester Backing
finish: Stain Resistant
repeat: None
durability: 100,000 Double Rubs
flame retardance: UFAC / NFPA 260 Class 1, CAL 117-2013
cleaning: W (Bleach Cleanable 9:1)

 **DOUGLASS**
 FABRICS

douglassfabric.com | 800.950.3684

PARAGON
 FURNITURE

Yosemite

Additional Colors / Order Samples: culpcontract.com



content: 100% Polyurethane with 70% Polyester,
 30% Cotton Backing
finish: Antimicrobial
repeat: Non-Matching
durability: 100,000 Double Rubs
seam strength: 61 lbs. Warp / 68 lbs. Weft
flame retardance: UFAC / NFPA 260 Class 1, CAL 117-2013 Section 1
cleaning: W (Bleach Cleanable 5:1)

CULP CONTRACT

contract@culp.com | 336.888.6274

Viceroy

Additional Colors / Order Samples: culpcontract.com

Grade 3



content: 100% Polyurethane (Polycarbonate)
 Polyester Backing
finish: Antimicrobial
repeat: Non-Matching
durability: 200,000 Double Rubs
seam slippage: 42 lbs. Warp / 71 lbs. Weft
flame retardance: UFAC / NFPA 260 Class 1, CAL 117-2013 Section 1
cleaning: W S

CULP CONTRACT

contract@culp.com | 336.888.6274

Box Chain

Additional Colors / Order Samples: cfstinson.com



Amalfi



Evergreen



Pomelo



Stucco



Rose



Frost



Antelope



Stardust



Beluga

content:

finish:

repeat:

durability:

seam strength:

flame retardance:

cleaning:

Vinyl Surface with Polyester Backing
Advanced Soil and Stain Resistant Top Coat
Non-Matching
100,000 Double Rubs
46 lbs. Warp / 35 lbs. Weft
UFAC / NFPA 260 Class 1, CAL 117-2013 Section 1
W (Bleach Cleanable 19:1)
GREENGUARD Certified®

Stinson

customerrelations@cfstinson.com | 800.841.6279

Castillo

Additional Colors / Order Samples: culcontract.com



Red



Clementine



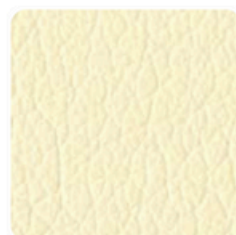
Honeydew



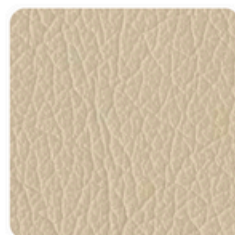
Breezy



Batik



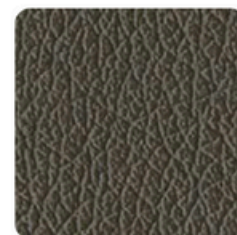
Buttercream



Buff



Metal



Steel

content:

finish:

repeat:

durability:

seam slippage:

flame retardance:

cleaning:

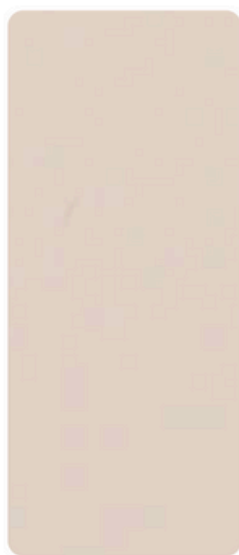
100% Polyurethane with 87% Polyester
13% Cotton Backing
i-Clean™ Stain & Moisture Repellent
Non-Matching
200,000 Double Rubs
31 lbs. Warp / 58 lbs. Weft
UFAC / NFPA 260 Class 1, CAL 117-2013 Section 1
W (Bleach Cleanable 5:1)

CULP CONTRACT

contract@culp.com | 336.888.6274

Golly

Additional Colors / Order Samples: culpcontract.com



Bisque



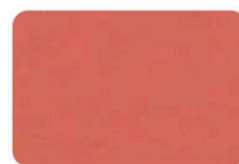
Brass



Armagnac



Red



Paprika



Tidepool



Turquoise



Waterloo



Rosemary



Silver



Porcini



Neutral



Urbane

content: 100% Polyurethane (Polycarbonate)
 Polyester Backing
repeat: Non-Matching
durability: 195,000 Double Rubs
seam slippage: 70 lbs. Warp / 44 lbs. Weft
flame retardance: UFAC / NFPA 260 Class 1, CAL 117-2013 Section 1
cleaning: **W S** (Bleach Cleanable 5:1)

CULP CONTRACT

contract@culp.com | 336.888.6274

Lara

Additional Colors / Order Samples: cfstinson.com



Cashew



Marigold



Miso



Marmalade



Port



Tranquil



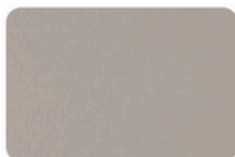
Patriot



Wizard



Sherwood



Gate



Mink



Kitten



Pitch

content: Non-Phthalate Vinyl Surface with Polyester Backing
finish: Advanced Soil and Stain Resistant Top Coat
repeat: Non-Matching / Directional
durability: Exceeds 1,300,000 Double Rubs
seam slippage: 35 lbs. Warp / 30 lbs. Weft
flame retardance: UFAC / NFPA 260 Class 1, CAL 117-2013 Section 1
cleaning: **W** (Bleach Cleanable 9:1)
GREENGUARD Certified®

Stinson

customerrelations@cfstinson.com | 800.841.6279

Staple

Additional Colors / Order Samples: cfstinson.com



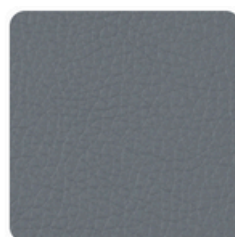
Paprika



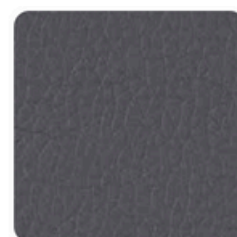
Camel



Mist



Twilight



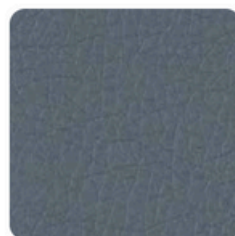
Voyage



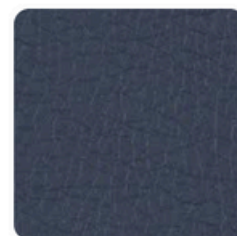
Malt



Smith



Academy



Nautical

content:

100% Polyurethane (polycarbonate & polyester resins, polyester, cotton backing)

finish:

Enhanced Soil and Stain Resistance

durability:

200,000 Double Rubs

seam strength:

61 lbs. Warp / 81 lbs. Weft

flame retardance:

UFAC / NFPA 260 Class 1, CAL 117-2013 Section 1

cleaning:

WS (Bleach Cleanable 4:1)

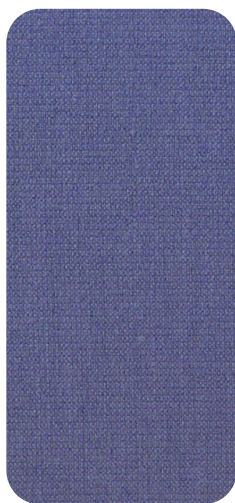
Reduced Environmental Impact

Stinson

customerrelations@cfstinson.com | 800.841.6279

Vibe

Additional Colors / Order Samples: douglassfabric.com



Ballpoint



Cityscape



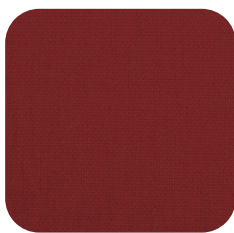
Grasshopper



Clementine



Grapevine



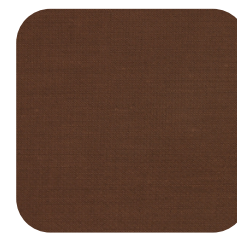
Indian Summer



Kernel



Mermaid



Cocoa

content:

100% Phthalate Free PVC Vinyl

finish:

Resilience^{SR}

repeat:

None

durability:

250,000 Double Rubs

flame retardance:

UFAC / NFPA 260 Class 1, CAL 117-2013

cleaning:

W (Bleach Cleaning 9:1)

 **DOUGLASS**
FABRICS

douglassfabric.com | 800.950.3684

Lattice

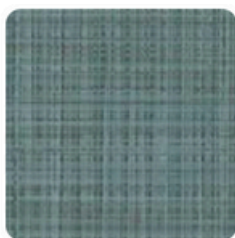
Order Samples: cfstinson.com



Fresco



Rosewood



Bayou



Sage



Buckwheat



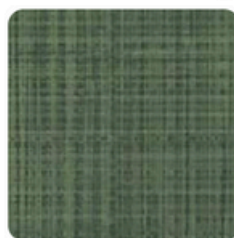
Goldfinch



Clay



Skipper



Grove



Metro

content:

finish:

repeat

durability:

seam strength:

flame retardance:

cleaning:

Non-Phthalate Vinyl Surface with Polyester Backing

Advanced Soil and Stain Resistant Top Coat

18" H x 18" V, Non-Matching / Directional

Exceeds 1,300,000 Double Rubs

35 lbs. Warp / 30 lbs. Weft

UFAC / NFPA 260 Class 1, CAL 117-2013 Section 1

W (Bleach Cleanable 9:1)

GREENGUARD Certified®

Stinson

customerrelations@cfstinson.com | 800.841.6279

Midway

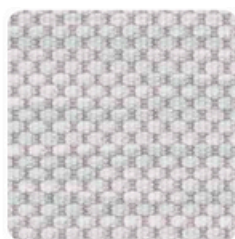
Additional Colors / Order Samples: mayerfabrics.com



Sand



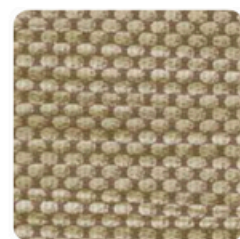
Sunshine



Haze



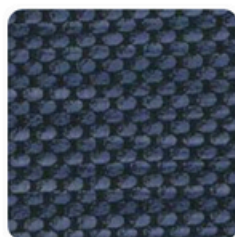
Spa



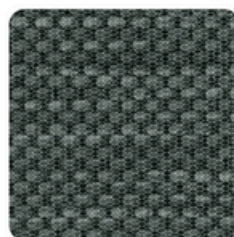
Wheat



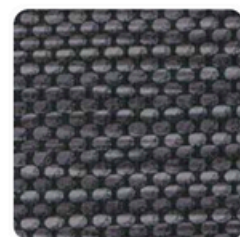
Persimmon



Indigo



Algae



Storm

content:

finish:

repeat:

durability:

seam strength:

flame retardance:

cleaning:

80% Phthalate-Free Vinyl Facing,

20% Polyester Backing

Soil & Stain Resistant Top Coat

with Ink-Resistance

18" H, 18" V

1,300,000 Double Rubs

35 lbs. Warp / 30 lbs. Weft

UFAC / NFPA 260 Class 1, CAL 117-2013 Section 1

W CFC (Bleach Cleanable 4:1)

GREENGUARD Certified®

MAYERFABRICS

customerservice@mayerfabrics.com | 800.428.4415

Edgeline

Additional Colors / Order Samples: douglassfabric.com



Mustard



Clover



Autumn



Royal



Crimson



Storm



Pewter



Espresso



Olive

content: 100% PVC Vinyl, Nylon Backing
finish: Stain Resistant
repeat: 3.7" H, 6.625" V
durability: 100,000 Double Rubs
flame retardance: UFAC / NFPA 260 Class 1, CAL 117-2013 Section 1
cleaning: W

 **DOUGLASS**
FABRICS

douglassfabric.com | 800.950.3684

Endurance EPU

Additional Colors / Order Samples: momentumtextilesandwalls.com



Copper



Claret



Sprout



Smith



Plum



Cascade



Neptune



Azure



Lapis



Ink



Taupe



Gull



Armor



Jetty



Nordic

content: 100% EPU Polyurethane
repeat: Non-Matching
durability: 1,000,000 Double Rubs
seam strength: 100 lbs. Warp / 95.4 lbs. Weft
flame retardance: UFAC / NFPA 260 Class 1, CAL 117-2013 Section 1, IMO Part 8
cleaning: W (Bleach Cleanable 4:1)

Reduced Environmental Impact; GREENGUARD Certified®,
PVC Free

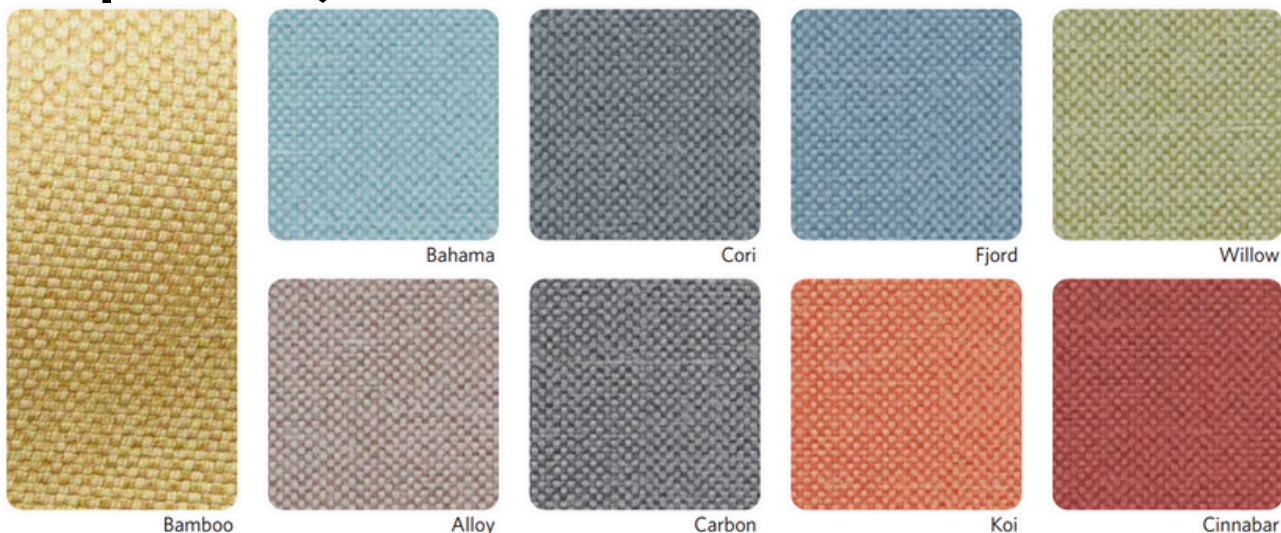


MOMENTUM
TEXTILES & WALLCOVERING

customerservice@momtex.com | 800.366.6839

Hopsack

Additional Colors / Order Samples: cfstinson.com



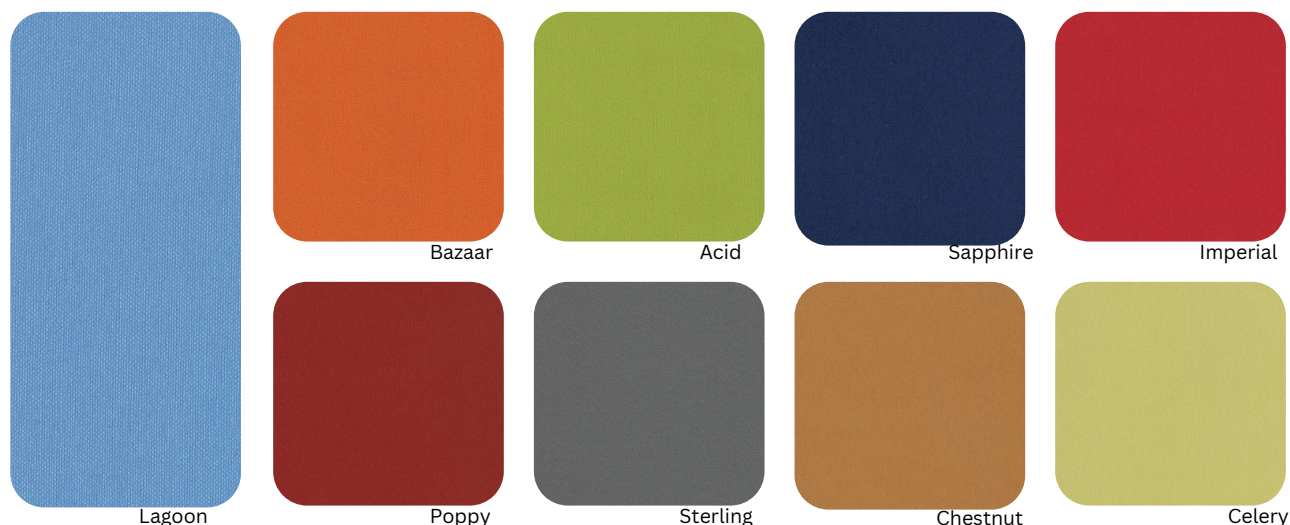
content: 100% Vinyl Face with 100% Polyester Backing
finish: Advanced Soil and Stain Resistant Top Coat
repeat: Non-Matching
durability: 100,000 Double Rubs
seam slippage: 46 lbs. Warp / 35 lbs. Weft
flame retardance: UFAC / NFPA 260 Class 1, CAL 117-2013 Section 1
cleaning: W (Bleach Cleanable 9:1)
 GREENGUARD Certified®

Stinson

customerrelations@cfstinson.com | 800.841.6279

Silvertex NEO

Additional Colors / Order Samples: douglassfabric.com



content: 100% Vinyl, Urethane Topcoat
finish: Silverguard® PermaBlok®
repeat: None
durability: 100,000 Double Rubs
flame retardance: UFAC / NFPA 260 Class 1, CAL 117-2013 Section 1
cleaning: W (Bleach Cleanable 9:1)

 **DOUGLASS**
 FABRICS

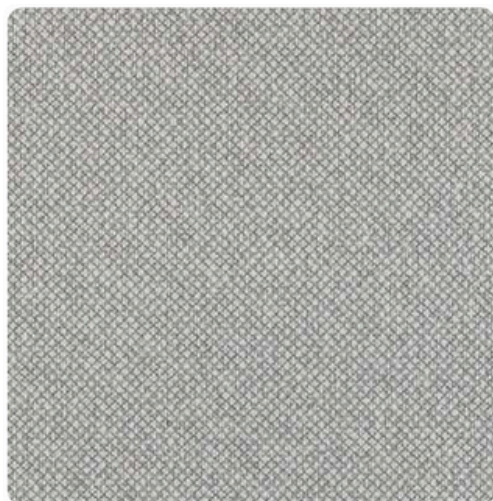
douglassfabric.com | 800.950.3684

To ensure color accuracy, please order a memo sample.
Reach out to quotes@paragoninc.com for more info.

Grade 6

Tribeca CV

Additional Colors / Order Samples: momentumtextilesandwalls.com



Cloud



Cane



Rubine



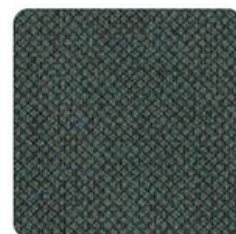
Lichen



Airy



Mariner



Plume

content: 100% Clean Vinyl / Phthalate Free
finish: Protective Overcoat®
repeat: Non-Matching
durability: 100,000 Double Rubs
seam strength: 42 lbs. Warp / 46 lbs. Weft
flame retardance: UFAC / NFPA 260 Class 1, CAL 117-2013 Section 1, IMO Part 8
cleaning: W (Bleach Cleanable 10:1)
 GREENGUARD Certified® PVC Free



MOMENTUM
TEXTILES & WALLCOVERING

customerservice@momtex.com | 800.366.6839

Vanguard CV

Additional Colors / Order Samples: momentumtextilesandwalls.com



French



Cream



Autumn



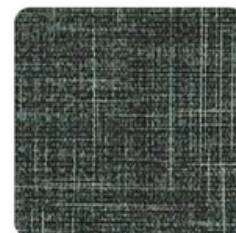
Sprout



Calico



Polarix



Spruce

content: 100% Clean Vinyl / Phthalate Free
finish: Protective Overcoat®
repeat: Non-Matching
durability: 100,000 Double Rubs
seam slippage: 42 lbs. Warp / 46 lbs. Weft
flame retardance: UFAC / NFPA 260 Class 1, CAL 117-2013 Section 1, IMO Part 8
cleaning: W (Bleach Cleanable 10:1)
 GREENGUARD Certified®, PVC Free

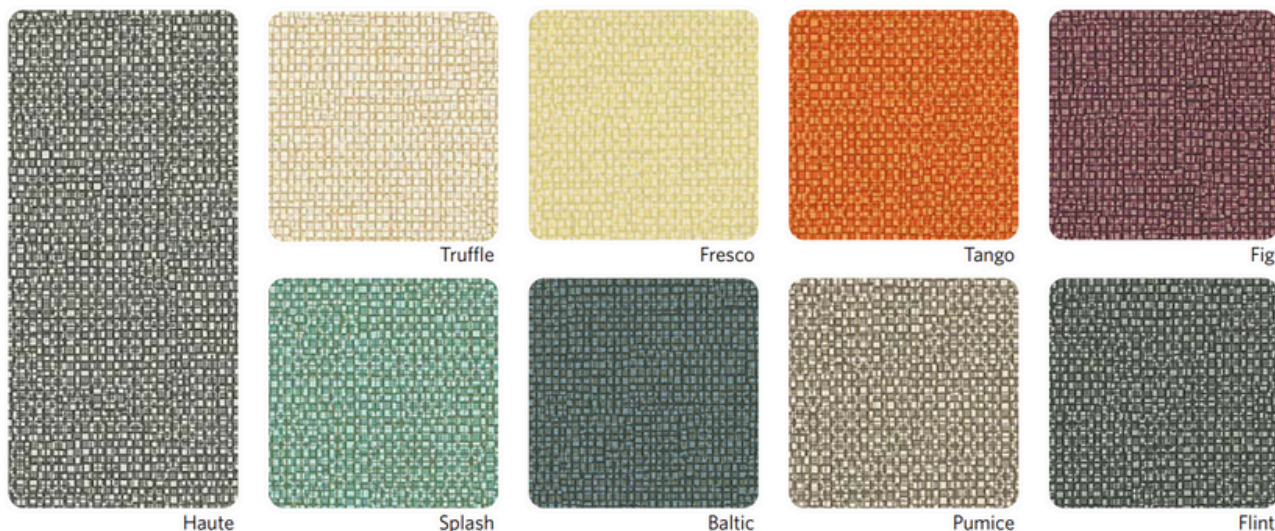


MOMENTUM
TEXTILES & WALLCOVERING

customerservice@momtex.com | 800.366.6839

Dexter EPU

Additional Colors / Order Samples: momentumtextilesandwalls.com



content: 100% EPU Polyurethane
repeat: 9.5" H, 20" V
durability: 285,000 Double Rubs
seam slippage: 61.8 lbs. Warp / 57.5 lbs. Weft
flame retardance: UFAC / NFPA 260 Class 1, CAL 117-2013 Section 1, IMO Part 8
cleaning: **W** (Bleach Cleanable 4:1)
GREENGUARD Certified®

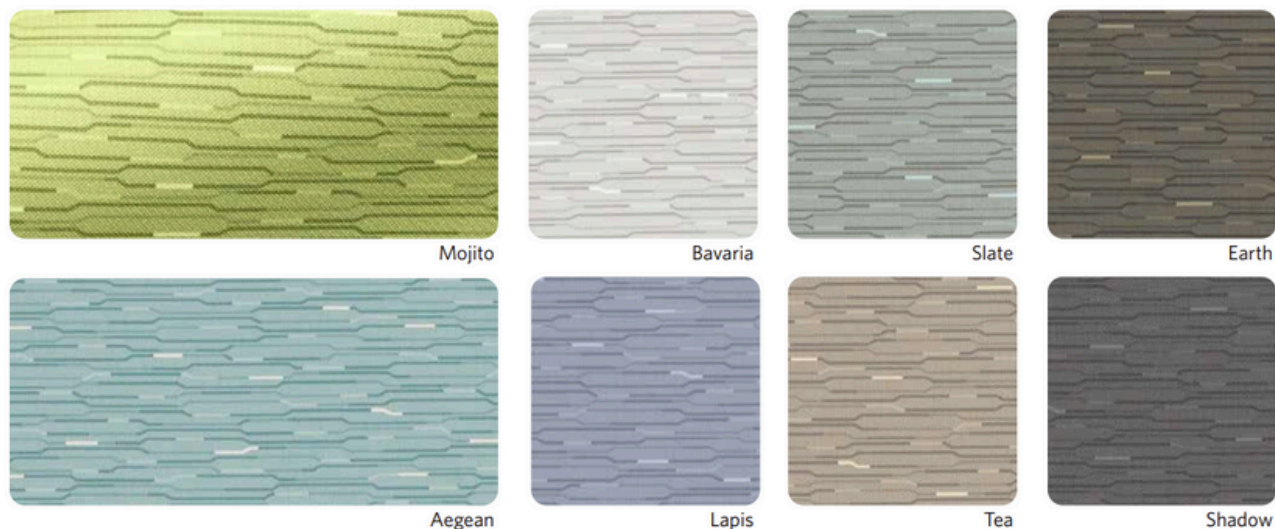


MOMENTUM
 TEXTILES & WALLCOVERING

customerservice@momtex.com | 800.366.6839

Level

Additional Colors / Order Samples: cfstinson.com



content: Vinyl Surface with Polyester Backing
finish: Advanced Soil and Stain Resistant Top Coat
repeat: 4.625" H, 8.625" V
durability: 1,300,000 Double Rubs
seam slippage: 35 lbs. Warp / 30 lbs. Weft
flame retardance: UFAC / NFPA 260 Class 1, CAL 117-2013 Section 1
cleaning: **W** (Bleach Cleanable 9:1)
GREENGUARD Certified®

Stinson

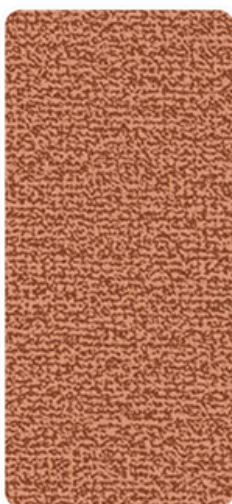
customerrelations@cfstinson.com | 800.841.6279

To ensure color accuracy, please order a memo sample.
Reach out to quotes@paragoninc.com for more info.

Grade 7

Mixer EPU

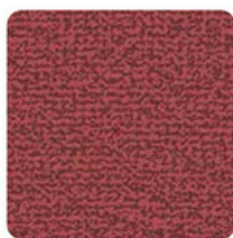
Additional Colors / Order Samples: momentumtextilesandwalls.com



Sunset



Golden Hour



Vermillion



Clover



Cove



Sugar



Pewter



Tidal



Basalt

content: 100% EPU Polyurethane
repeat: Non-Matching
durability: 130,000 Double Rubs
seam slippage: 64.5 lbs. Warp / 57.6 lbs. Weft
flame retardance: UFAC / NFPA 260 Class 1, CAL 117-2013
cleaning: **WS** (Bleach Cleanable 4:1)
GREENGUARD Certified®



MOMENTUM
TEXTILES & WALLCOVERING

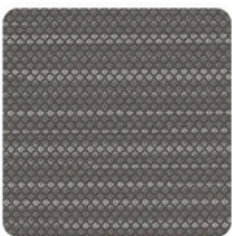
customerservice@momtex.com | 800.366.6839

Row

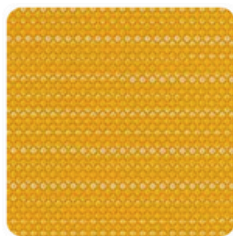
Additional Colors / Order Samples: momentumtextilesandwalls.com



Wheat



Shale



Marigold



Waltz



Sage



Coffee



Auburn



Fjord



Willow

content: 100% Polyurethane / PVC Free
repeat: Non-Matching
durability: 500,000 Double Rubs
seam slippage: 110 lbs. Warp / 84 lbs. Weft
flame retardance: UFAC / NFPA 260 Class 1, CAL 117-2013 Section 1
cleaning: **W** (Bleach Cleanable 4:1)
GREENGUARD Certified® PVC Free



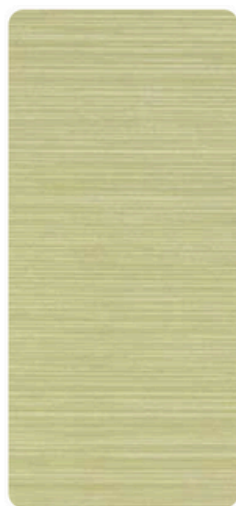
MOMENTUM
TEXTILES & WALLCOVERING

customerservice@momtex.com | 800.366.6839

Sentiero



Additional Colors / Order Samples: cfstinson.com



Kiwi



Arancione



Aqua



Azzuro



Blu Scuro



Lido



Silk



Stella



Marrone

content:
finish:
repeat
durability:
seam slippage:
flame retardance:
cleaning:

Non-Phthalate Vinyl Surface, Recycled Polyester Backing
 Advanced Soil and Stain Resistant Top Coat
 Directional / Non-Matching
 100,000 Double Rubs
 46 lbs. Warp / 35 lbs. Weft
 UFAC / NFPA 260 Class 1, CAL 117-2013
W S (Bleach Cleanable 10:1)
GREENGUARD Gold Certified®

Stinson

customerrelations@cfstinson.com | 800.841.6279

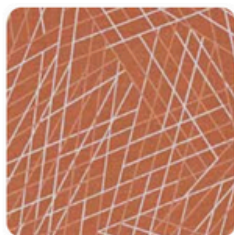
Vector



Additional Colors / Order Samples: cfstinson.com



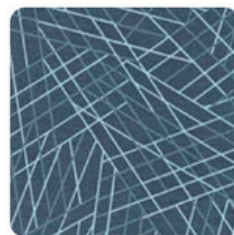
Lime



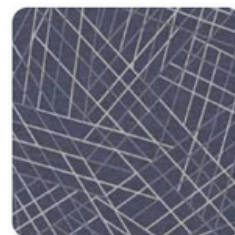
Spice



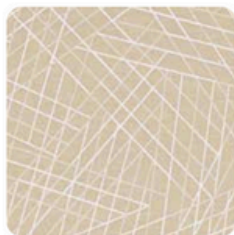
Segment



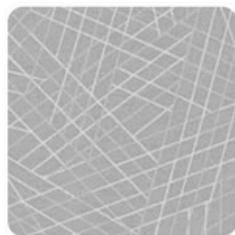
Parallel



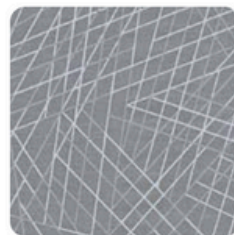
Blue



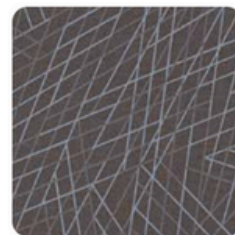
Suede



Angle



Ray



Intersect

content:
finish:
repeat
durability:
seam slippage:
flame retardance:
cleaning:

Phthalate-Free Vinyl Face with Polyester Backing
 Advanced Soil and Stain Resistant Top Coat + Ink Resistance
 11.25" H, 11.875" V
 100,000 Double Rubs
 46 lbs. Warp / 35 lbs. Weft
 UFAC / NFPA 260 Class 1, CAL 117-2013 Section 1
W S BC (Bleach Cleanable 9:1)
GREENGUARD Certified®

Stinson

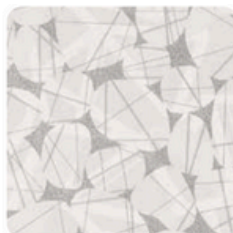
customerrelations@cfstinson.com | 800.841.6279

Riverstone

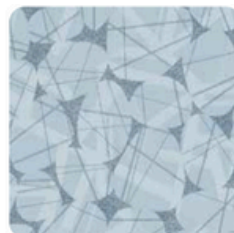
Additional Colors / Order Samples: cfstinson.com



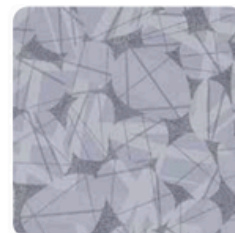
Bridge



Mineral



Stream



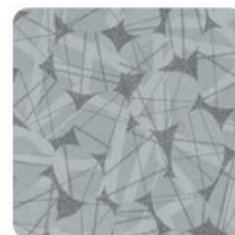
Water



Beryl



Bayou



Slate

content:

finish:

repeat

durability:

seam slippage:

flame retardance:

cleaning:

Phthalate-Free Vinyl Face with Polyester Backing
Advanced Soil and Stain Resistant Top Coat + Ink
Resistance

16.875" H, 8" V (Non-Matching Directional)

1,300,000 Double Rubs

35 lbs. Warp / 30 lbs. Weft

UFAC / NFPA 260 Class 1, CAL 117-2013 Section 1

W (Bleach Cleanable 9:1)

GREENGUARD Gold Certified®

Stinson

customerrelations@cfstinson.com | 800.841.6279

Silica

Additional Colors / Order Samples: momentumtextilesandwalls.com

Grade 9



Sands



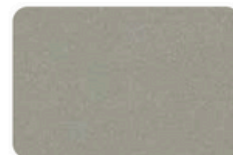
Tropic



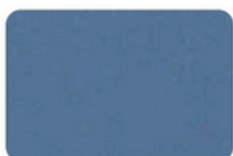
Appletini



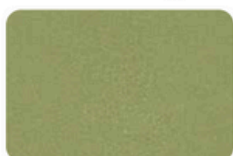
Lemon



Shale



Regatta



Dewpoint



Marigold



Breakwater



Bright Night



Surf



Dare



Gallant

content:

repeat:

durability:

seam strength:

flame retardance:

cleaning:

100% Silicone

Non-Matching

365,000 Double Rubs

71 lbs. Warp / 79 lbs. Weft

UFAC / NFPA 260 Class 1, CAL 117-2013 Section 1, IMO Part 8

WS (Bleach Cleanable 4:1)

GREENGUARD Gold Certified® PVC Free



MOMENTUM
TEXTILES & WALLCOVERING

customerservice@momtex.com | 800.366.6839

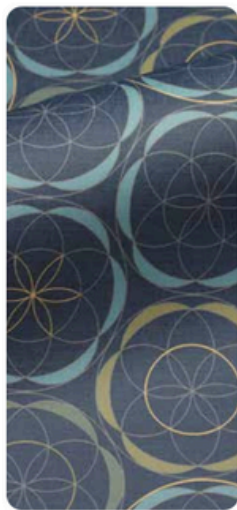
PARAGON
FURNITURE

To ensure color accuracy, please order a memo sample.
Reach out to quotes@paragoninc.com for more info.

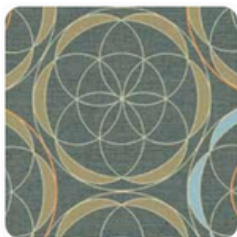
Grade 10

Meteor

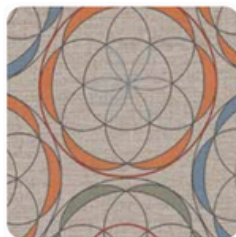
Additional Colors / Order Samples: cfstinson.com



Cobalt



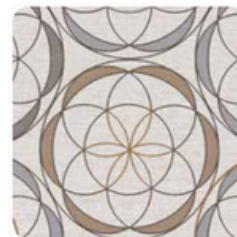
March



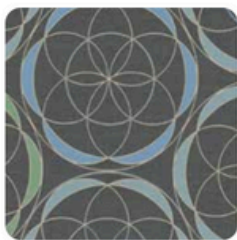
Terra



Cliff



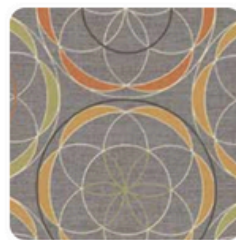
Moonstone



Vessel



Rain



Nomad



Pastoral

content:

finish:

repeat

durability:

seam slippage:

flame retardance:

cleaning:

Non-Phthalate Vinyl Surface with Polyester Backing
Advanced Soil & Stain Resistant Top Coat
13.125" H, 11.875" V
100,000 Double Rubs
46 lbs. Warp / 35 lbs. Weft
UFAC / NFPA 260 Class 1, CAL 117-2013 Section 1
W BC (Bleach Cleanable 9:1)
GREENGUARD Certified®

Stinson

customerrelations@cfstinson.com | 800.841.6279

Pebble Trail

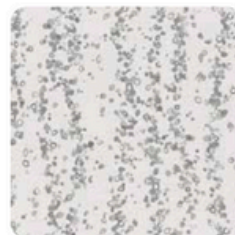
Order Samples: cfstinson.com



Celadon



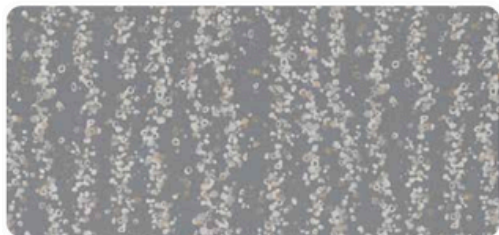
Beach



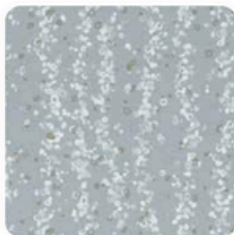
Calm



Driftwood



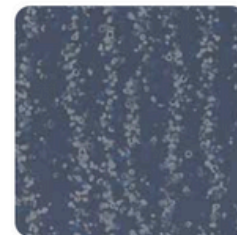
Delta



Tranquil



Aquifer



Huron

content:

finish:

repeat

durability:

seam slippage:

flame retardance:

cleaning:

Non-Phthalate Vinyl Surface with Polyester Backing
Advanced Soil & Stain Resistant Top Coat + Ink & Denim
Resistance
13.5" H, 9" V, Directional
100,000 Double Rubs
46 lbs. Warp / 35 lbs. Weft
UFAC / NFPA 260 Class 1, CAL 117-2013 Section 1
W (Bleach Cleanable 9:1)
GREENGUARD Gold Certified®

Stinson

customerrelations@cfstinson.com | 800.841.6279



Showcasing Momentum Textiles Tribeca CV



Showcasing Culp Contract Viceroy

Paragon Furniture
Oingo Stool_NOW_fabrics_May2025

2224 E Randol Mill Rd
Arlington, TX 76011

(p) 817.633.3242

<https://www.paragoninc.com/>

PARAGON[™]
FURNITURE